

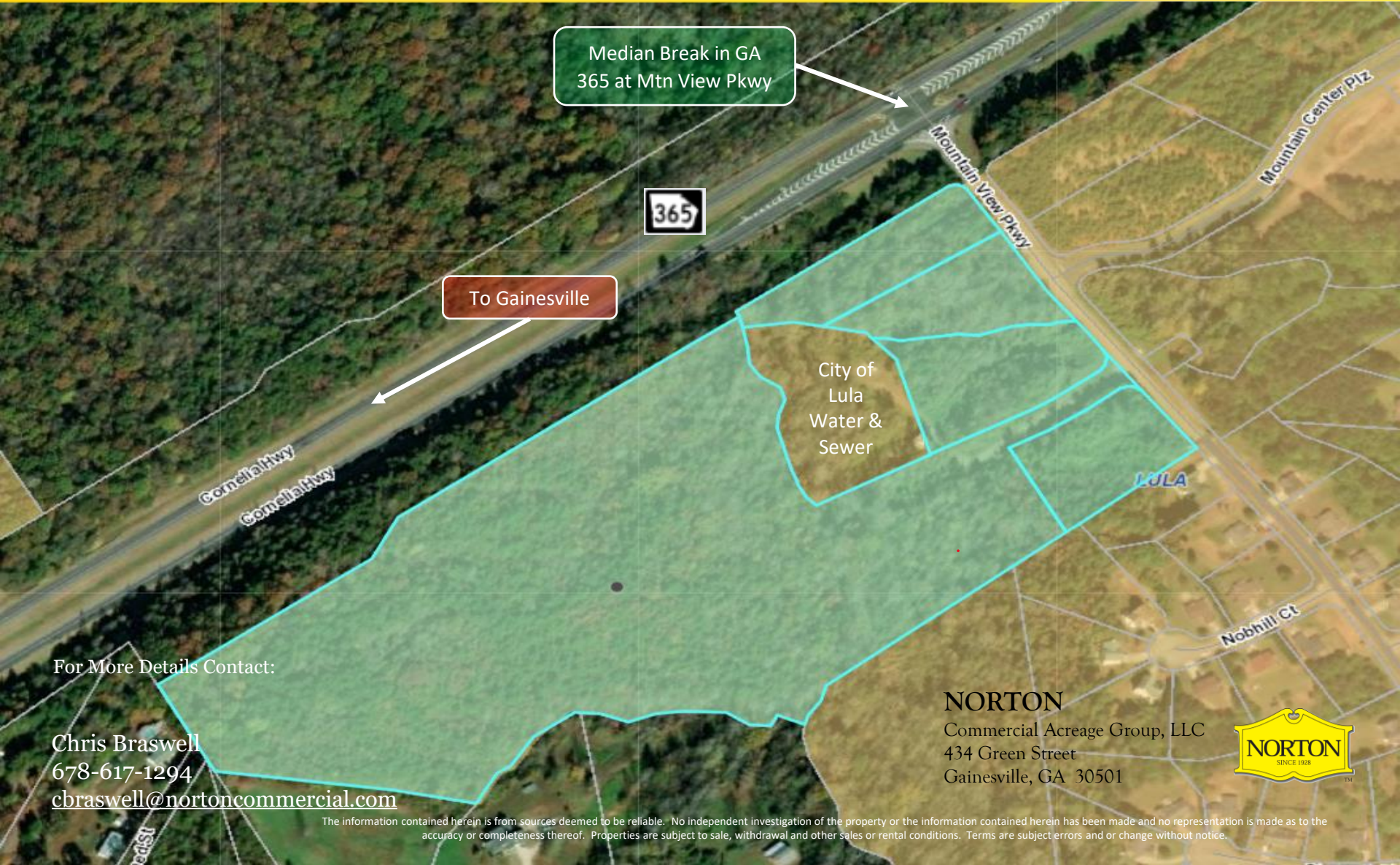
29.45 Acres+/- FOR SALE - Prime Industrial/Commercial Site

MOUNTAIN VIEW COMMERCIAL PARK

**Hall County, GA / GA 365 N at Mountain View Pkwy;
Lula, GA**

GREAT LOCATION

**Excellent Visibility
From GA 365**



To Gainesville

Median Break in GA
365 at Mtn View Pkwy

For More Details Contact:

Chris Braswell
678-617-1294
cbraswell@nortoncommercial.com

NORTON
Commercial Acreage Group, LLC
434 Green Street
Gainesville, GA 30501



The information contained herein is from sources deemed to be reliable. No independent investigation of the property or the information contained herein has been made and no representation is made as to the accuracy or completeness thereof. Properties are subject to sale, withdrawal and other sales or rental conditions. Terms are subject errors and or change without notice.

29.45 Acres+/- FOR SALE – Prime Industrial/Commercial Site

MOUNTAIN VIEW COMMERCIAL PARK

Hall County, GA / GA 365 N at Mountain View Pkwy;
Lula, GA


GREAT LOCATION

Possible Subdivision

5108 Mtn. View Pkwy (Site 1): 1.59 Ac
5114 Mtn. View Pkwy (Site 2): 1.48 Ac
5122 Mtn. View Pkwy (Site 3): 1.86 Ac
5130 Mtn. View Pkwy (Site 4): 1.52 Ac
0 Mtn. View Pkwy (Site 5): 23.00 Ac
TOTAL: 29.45 Ac

Median Break –
GA 365 at
Mt. View Pkwy



To

&
Gainesville

For More Details Contact:

Chris Braswell
678-617-1294
cbraswell@nortoncommercial.com

NORTON
Commercial Acreage Group, LLC
434 Green Street
Gainesville, GA 30501



The information contained herein is from sources deemed to be reliable. No independent investigation of the property or the information contained herein has been made and no representation is made as to the accuracy or completeness thereof. Properties are subject to sale, withdrawal and other sales or rental conditions. Terms are subject errors and or change without notice.

29.45 Acres+/- FOR SALE – Prime Industrial/Commercial Site

MOUNTAIN VIEW COMMERCIAL PARK

Hall County, GA / GA 365 N at Mountain View Pkwy;
Lula, GA

CITY OF LULA

Water & Sewer
At Site



Median Break –
GA 365 at
Mt. View Pkwy

365

Subject
Property

For More Details Contact:
Chris Braswell
678-617-1294
cbraswell@nortoncommercial.com

NORTON
Commercial Acreage Group, LLC
434 Green Street
Gainesville, GA 30501



The information contained herein is from sources deemed to be reliable. No independent investigation of the property or the information contained herein has been made and no representation is made as to the accuracy or completeness thereof. Properties are subject to sale, withdrawal and other sales or rental conditions. Terms are subject errors and or change without notice.

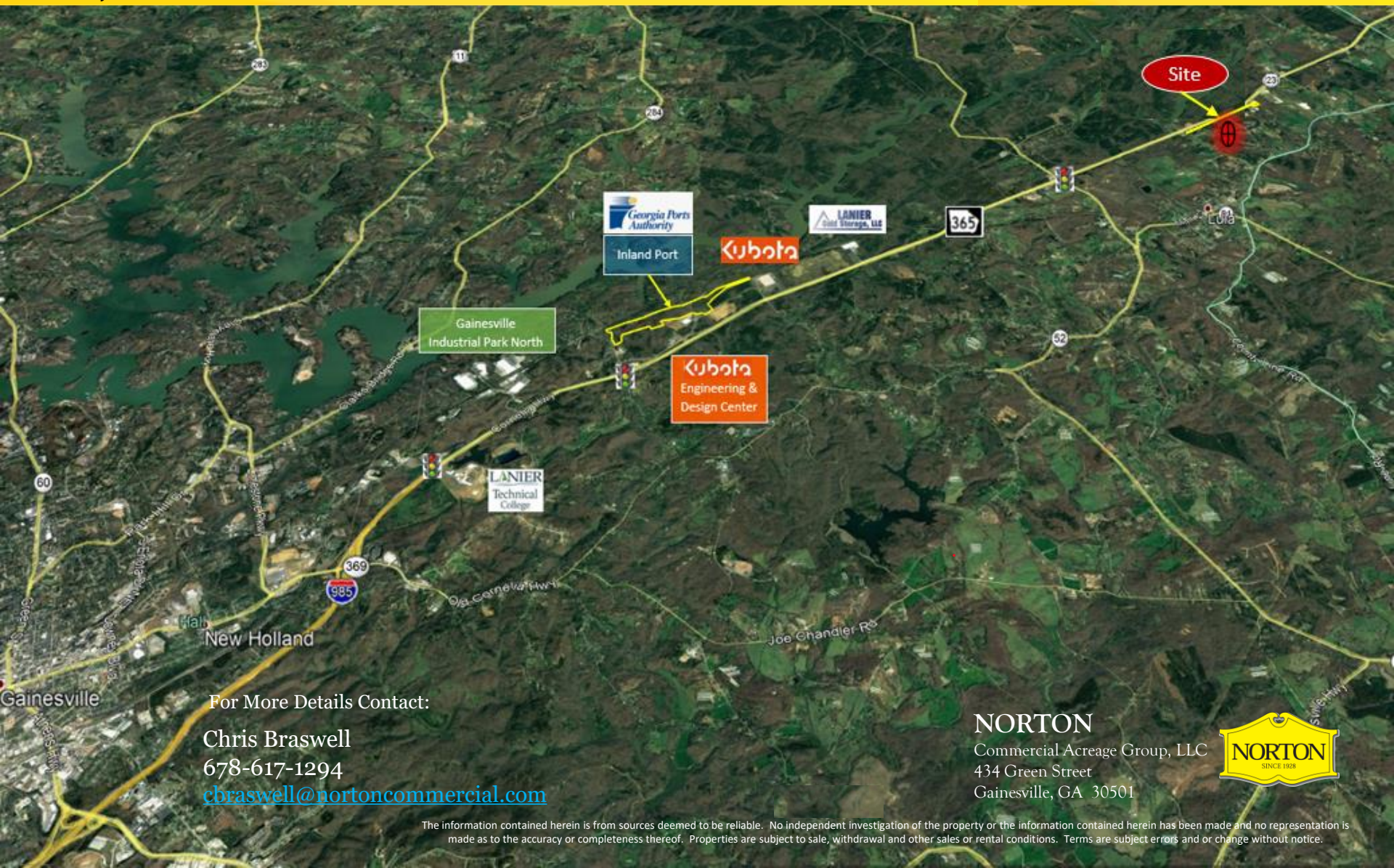
29.45 Acres+/- FOR SALE – Prime Industrial/Commercial Site

MOUNTAIN VIEW COMMERCIAL PARK

Hall County, GA / GA 365 N at Mountain View Pkwy;
Lula, GA

Approximate Drive Times

- Inland Port: 7 Min
- Ind Park North: 9 Min
- Lanier Tech: 10 Min
- I-985/Exit 22 (US 129): 14 Min



For More Details Contact:

Chris Braswell

678-617-1294

cbraswell@nortoncommercial.com

NORTON

Commercial Acreage Group, LLC
434 Green Street
Gainesville, GA 30501



29.45 Acres+/- FOR SALE - Prime Industrial/Commercial Site

MOUNTAIN VIEW COMMERCIAL PARK

Hall County, GA / GA 365 N at Mountain View Plaza;
Lula, GA

SITE LOCATION &
HALL COUNTY
DEMOGRAPHICS

HALL COUNTY, GA

DEMOGRAPHICS

POPULATION

195,961

1.61% 1-YEAR GROWTH

MEDIAN AGE

36.3

NUMBER OF EMPLOYEES

91,959

2.11% 1-YEAR GROWTH

POVERTY RATE

14.6%

MEDIAN HOUSEHOLD INCOME

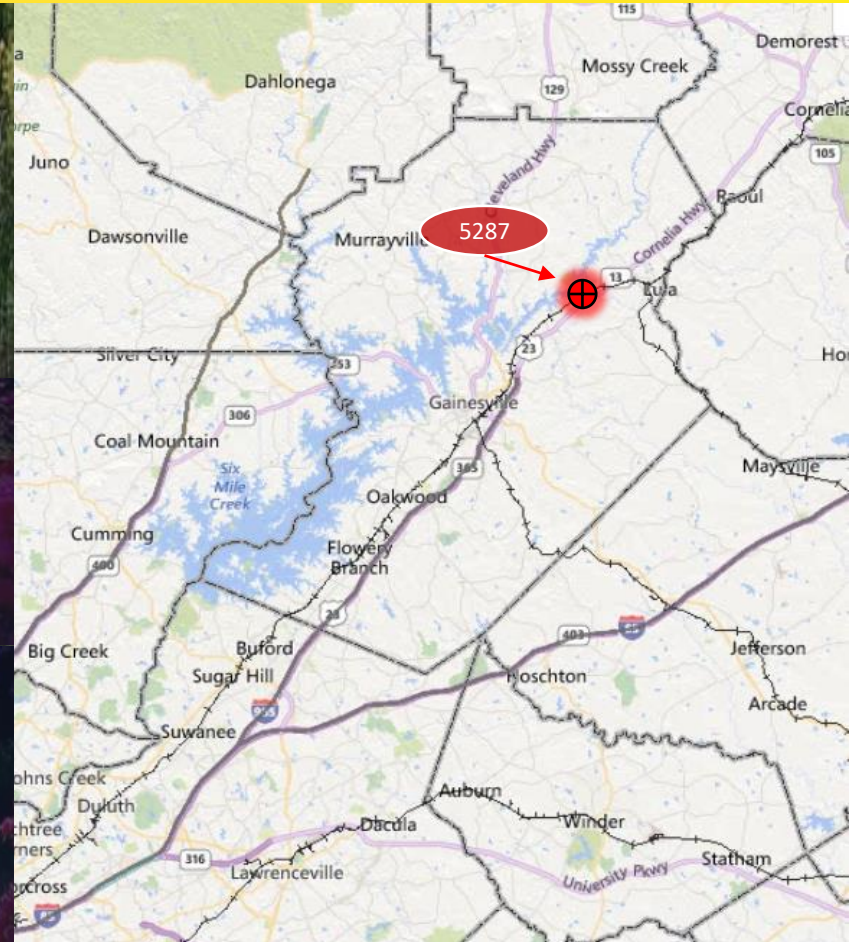
\$59,898

7.69% 1-YEAR GROWTH

MEDIAN PROPERTY VALUE

\$183,200

6.57% 1-YEAR GROWTH



For More Details Contact:

Chris Braswell
678-617-1294

cbraswell@nortoncommercial.com

NORTON

Commercial Acreage Group, LLC
434 Green Street
Gainesville, GA 30501



The information contained herein is from sources deemed to be reliable. No independent investigation of the property or the information contained herein has been made and no representation is made as to the accuracy or completeness thereof. Properties are subject to sale, withdrawal and other sales or rental conditions. Terms are subject errors and or change without notice.