

MEDICAL FOR LEASE

134 Ansley Drive, Dahlonega, GA 30533

Multi-Tenant Medical Building



DAHLONEGA MEDICAL MALL



Norton Commercial & Acreage Group, LLC

434 Green Street

Gainesville, GA 30501

770.297.4800 (Main)

470.691.0105 (Fax)

www.NortonCommercial.com

MEDICAL SPACE

134 Ansley Drive, Dahlonega, GA 30533

Multi-Tenant Medical Building



Downtown
Dahlonega



Hospital

HWY 60

Property Summary

Lease Type: NNN

Lease Rate: Inquire

Term: 3-10 year

Second Floor: [Click Here](#)

- Suite 503: 1,133 +/-

- Suite 500: 6,705 (including Research Lab)

Property Overview

Dahlonega Medical Mall is a Multi-Medical Facility within Dahlonega's Medical Park, neighboring the Hospital. The facility is 25,000+/- SF in total and offers a range of "Class A" Medical Suites and Research Laboratories. Dahlonega is home to The University of North Georgia and is located at the end of GA 400 with neighboring communities of Gainesville, Cumming, Dawsonville and other high growth communities (1-hour North of Atlanta).

*Some suites may offer professional desks and lab tables.



Charlie Hawkins

770.718.5206 (Office)

678.614.0837 (Cell)

CHawkins@GoNorton.com



Tanya Mulka

770.532.0022 (Office)

404.218.5906 (Cell)

TMulka@GoNorton.com

MEDICAL SPACE

134 Ansley Drive, Dahlonega, GA 30533

Multi-Tenant Medical Building



Charlie Hawkins

770.718.5206 (Office)

678.614.0837 (Cell)

CHawkins@GoNorton.com



Tanya Mulka

770.532.0022 (Office)

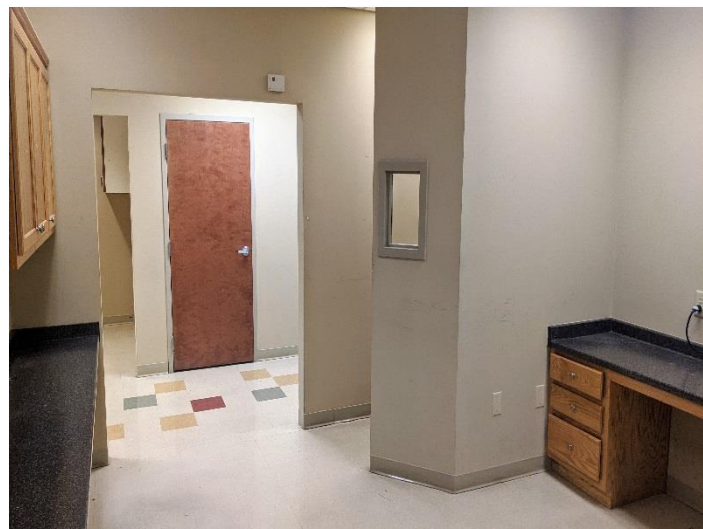
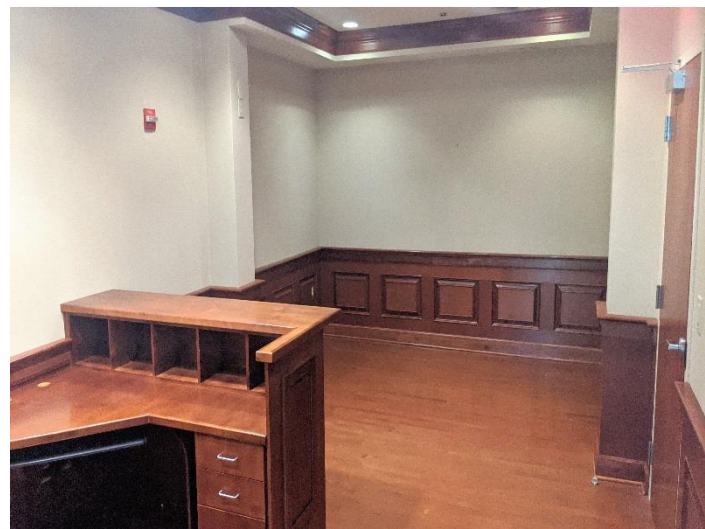
404.218.5906 (Cell)

TMulka@GoNorton.com

MEDICAL SPACE

134 Ansley Drive, Dahlonega, GA 30533

Multi-Tenant Medical Building



Charlie Hawkins

770.718.5206 (Office)

678.614.0837 (Cell)

CHawkins@GoNorton.com



Tanya Mulka

770.532.0022 (Office)

404.218.5906 (Cell)

TMulka@GoNorton.com

MEDICAL SPACE

134 Ansley Drive, Dahlonega, GA 30533

Multi-Tenant Medical Building



Charlie Hawkins

770.718.5206 (Office)

678.614.0837 (Cell)

CHawkins@GoNorton.com



Tanya Mulka

770.532.0022 (Office)

404.218.5906 (Cell)

TMulka@GoNorton.com