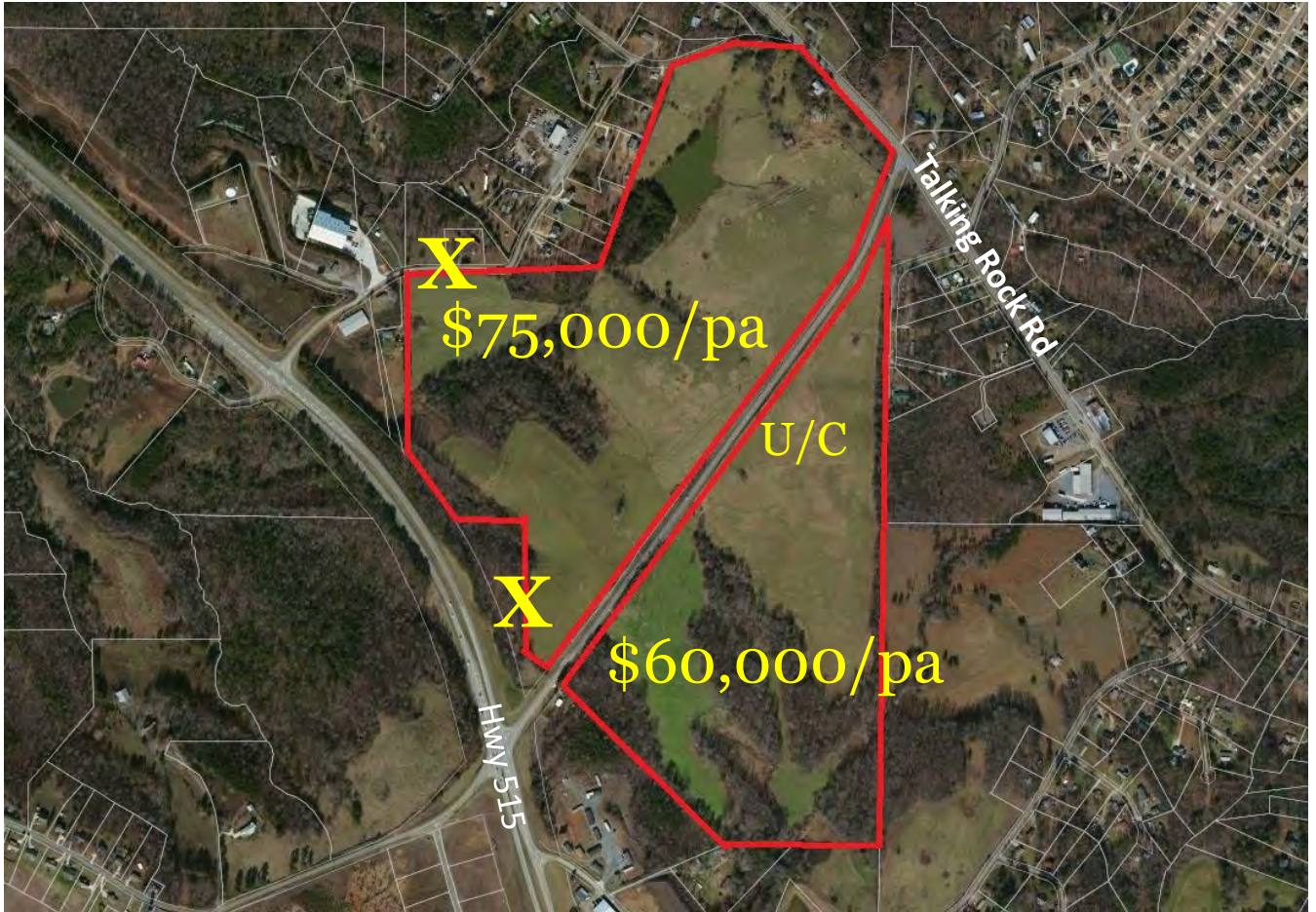




nortoncommercial.com

FOR SALE



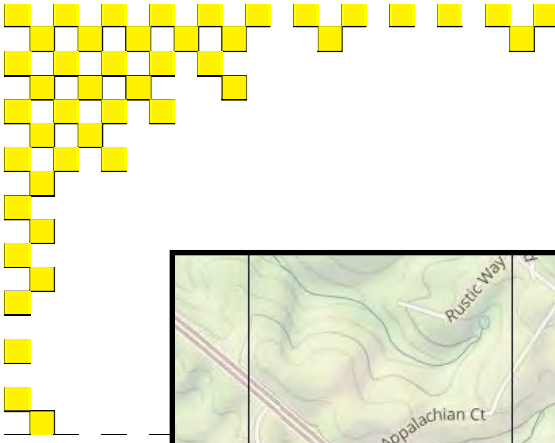
- 162 + acre tract: 73 acres+/- south of Philadelphia and 87 acres north of Philadelphia
- Frontage on Hwy 515 and Talking Rock Road
- All Utilities Available
- Adjacent to Walmart just north of Hwy 53
- Asking Price: \$60,000 per acre for 23 acres, potential multi-family and townhomes
- Asking \$75,000 for 102 acres potential commercial.
- Sewer located just South of the Property
- "X" INDICATES OUTPARCEL BEING MARKETED SEPARATELY

Gina Johnson
404-556-4193
gjohnson@gonorton.com

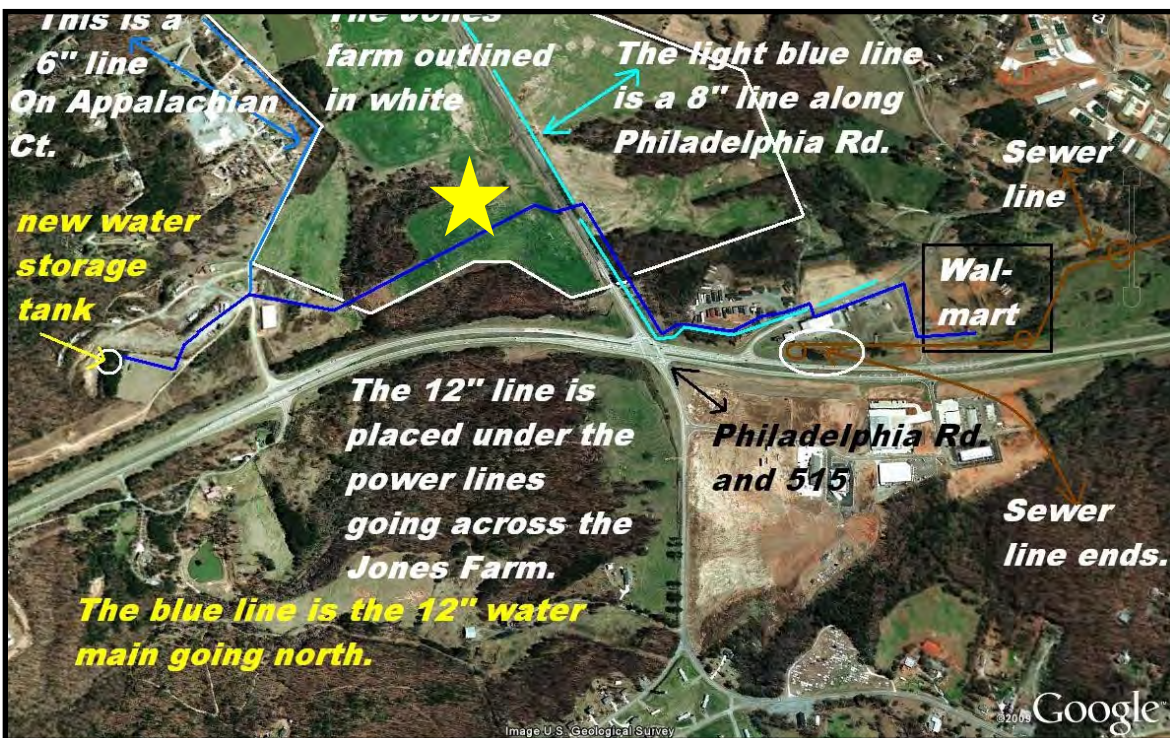
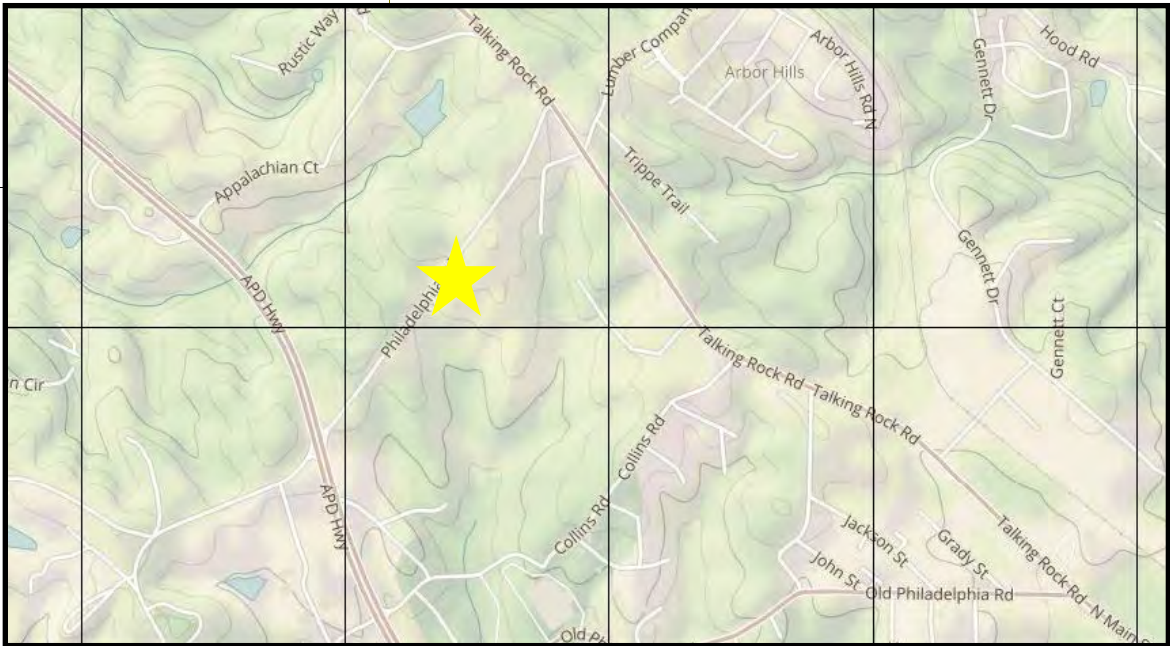
John Drew
678-428-7475
jdrew@gonorton.com



The information contained herein is from other sources believed to be reliable. No independent investigation of the property or the information contained herein has been made, and no representation is made as to the accuracy or completeness thereof. Properties are subject to sale, withdrawal and other sales or rental condition. Terms are subject to errors, and change without notice.



nortoncommercial.com



Gina Johnson

404-556-4193

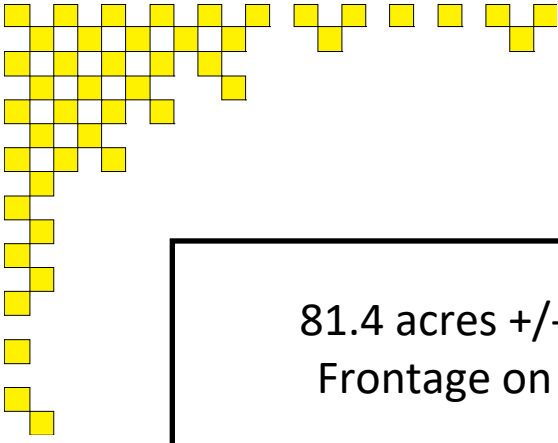
gjohnson@gonorton.com

John Drew

678-428-7475

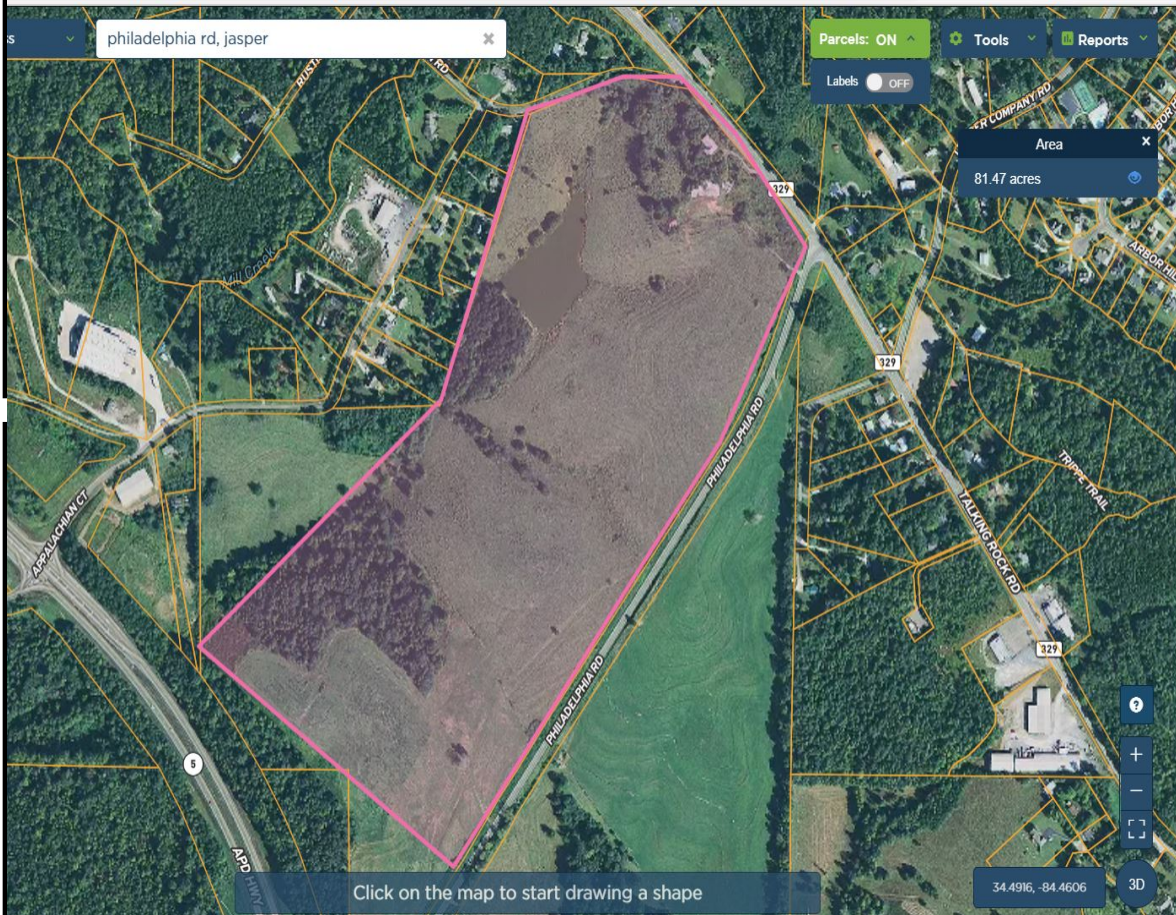
jdrew@nortoncommercial.com

www.nortoncommercial.com



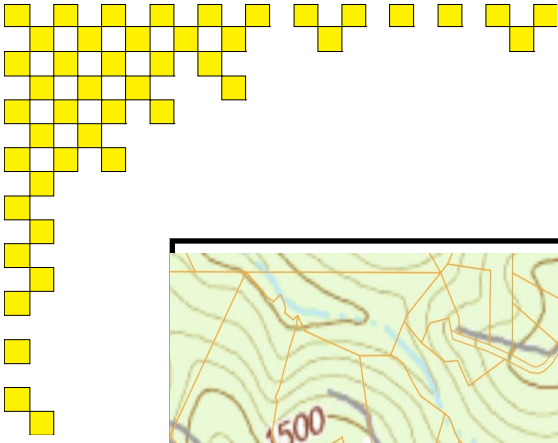
nortoncommercial.com

81.4 acres +/- on the north side of Philadelphia Frontage on Talking Rock Road east of power easement

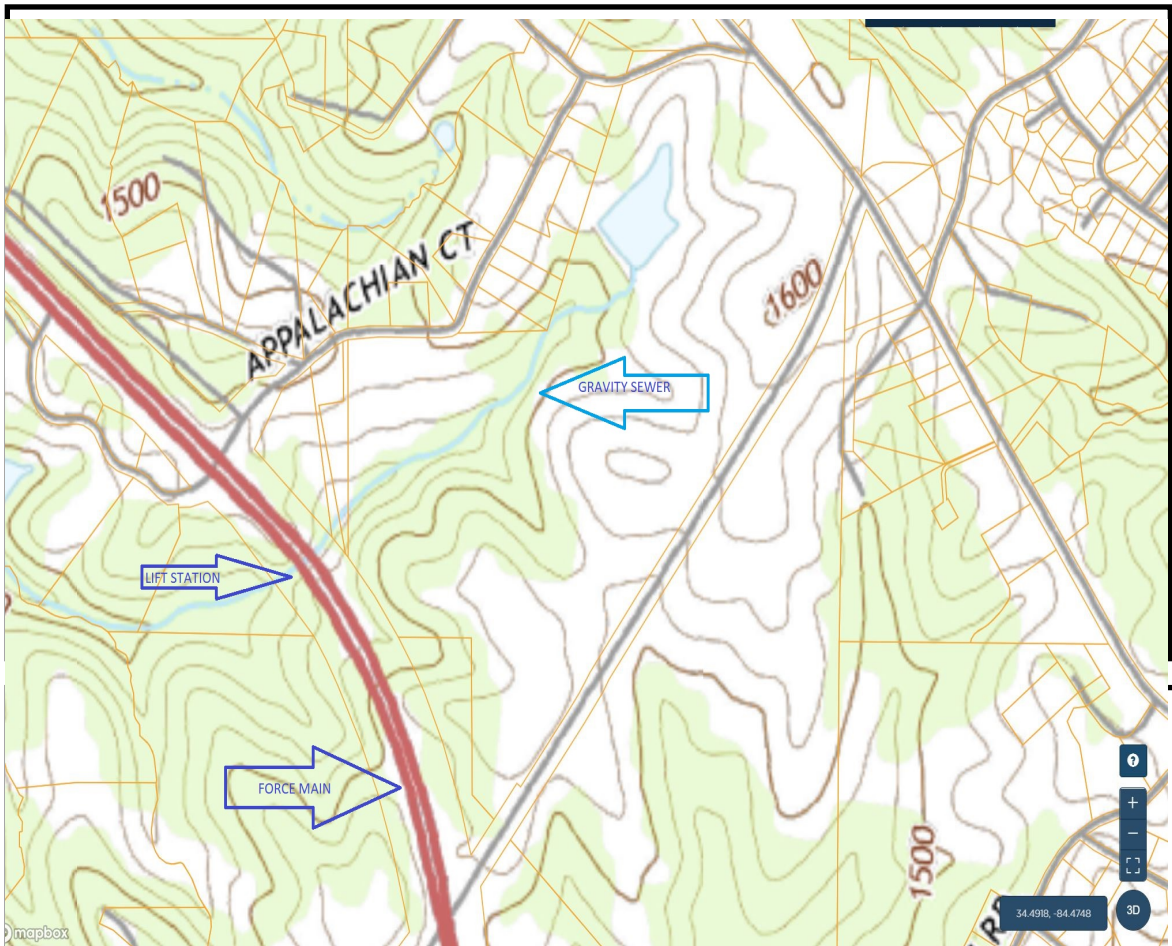


Gina Johnson
404-556-4193
gjohnson@gonorton.com

John Drew
678-428-7475
jdrew@nortoncommercial.com
www.nortoncommercial.com



nortoncommercial.com



Existing Jasper sewer is located south of Philadelphia at the "antiques store" on Old Philadelphia. This sewer serves the Walmart shopping center

Gina Johnson

404-556-4193

gjohnson@gonorton.com

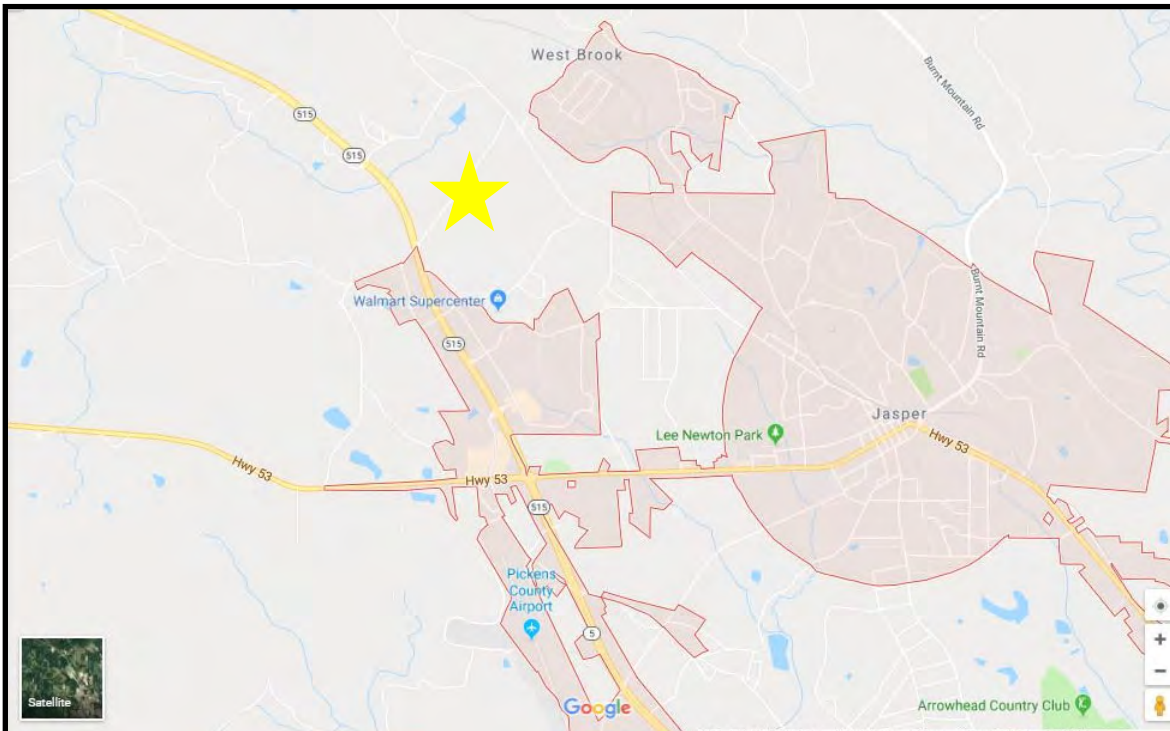
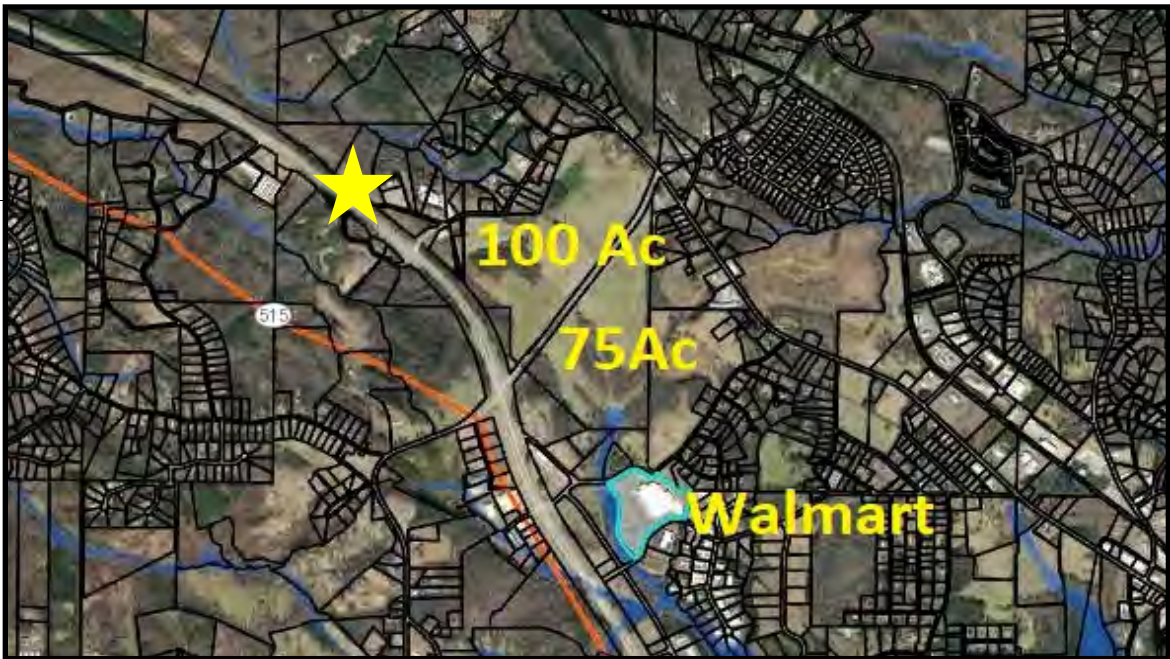
John Drew

678-428-7475

jdrew@nortoncommercial.com



nortoncommercial.com



Gina Johnson
404-556-4193

gjohnson@gonorton.com

John Drew
678-428-7475

jdrew@nortoncommercial.com
www.nortoncommercial.com